



Bronze Series 7G

Product Manual

Register your Monitor Audio speakers
to ensure the best possible product and customer support

Register your speakers using the QR code
or visit **monitoraudio.com/registration**



Welcome to Bronze Series 7G

Thank you for purchasing our Bronze Series 7G speakers, you're now ready to start your journey to breathtaking sound.

Bronze Series 7G is the entry point to achieving an enhanced listening experience.

In this product manual, you'll find information about setting up your system and how to maintain your speakers for a lifetime of enjoyment.

If you need any further assistance, please contact our technical team at monitoraudio.com/support

Contents

Unboxing	2
Spikes and feet	4
Installing Bronze On-Wall 7G	6
Setting up your system	8
Wiring your speakers	14
Using your speakers	16
Care & maintenance	18
Warranty	19
Specifications	20

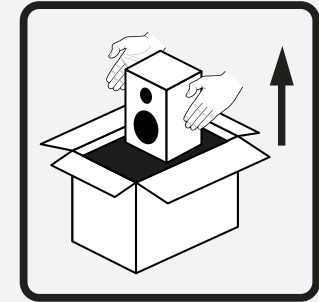
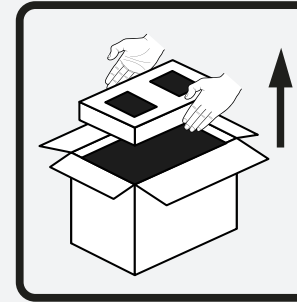
Before you unpack your loudspeakers, please make sure that there is plenty of clean floor area available.



WARNING: The recommended number of people is printed on the outer carton. DO NOT attempt to lift any loudspeakers requiring two people alone.

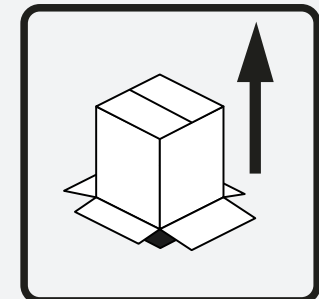
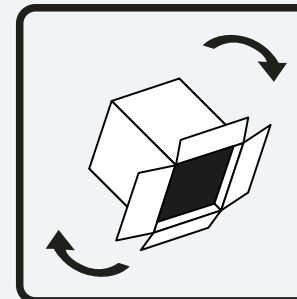
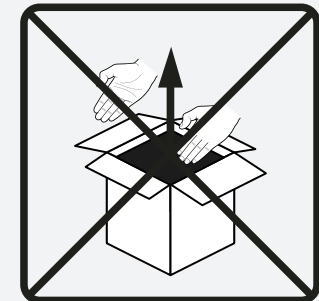
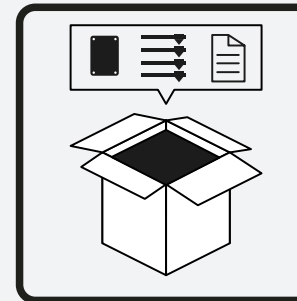
All models except Bronze 300 7G

1. Open the top of the box and remove the cap with the accessories.
2. Lift the speaker(s) from the sides out of the box and remaining end cap. To avoid damaging the tweeter and drive units we recommend picking up the speaker from the sides.
3. Remove the protective bag.



Bronze 300 7G

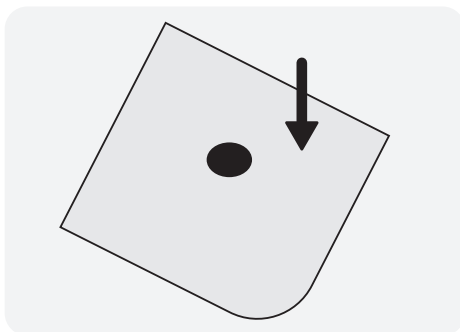
1. Open the top of the box and remove all accessories from the end cap.
2. Flip the box over and lift up the outer carton.
3. Remove the base end cap (which will currently be facing upwards).
4. Fit the outriggers and feet to the base of the speaker using the supplied bolts. If the speaker is going to be used on a carpeted floor, or where spikes are appropriate, you can also fit the spikes to the feet. Refer to page 4.
5. Flip over the speaker once more to return it to normal orientation.
6. Remove the remaining end cap and the protective bag.



Bronze 50 7G & Bronze Centre 7G feet

The Bronze 50 7G and Bronze Centre 7G come with self adhesive rubber feet in the packaging.

These should be placed on the underside of the cabinet in the corners when placing the speakers on a shelf or when using third party stands for the speakers. This helps to isolate the loudspeaker and reduce the chances of it moving.



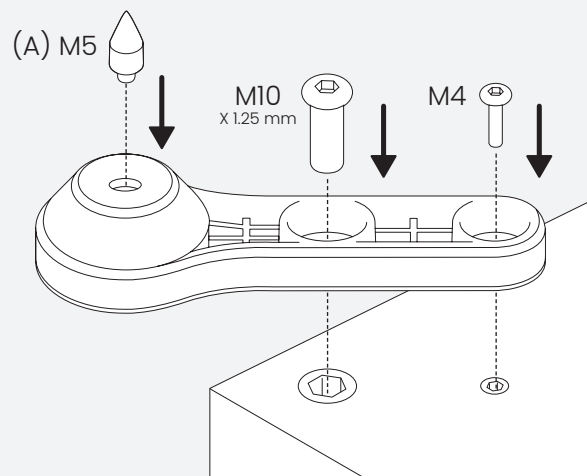
Bronze 300 7G outrigger feet

The feet and outriggers are supplied assembled for use on non-carpeted, wooden/hard floors or where spikes are inappropriate. All that is required is to fix them to the speaker base using the supplied bolts and hex keys.

If the speaker is being installed on a carpeted floor, screw the spike (A) into the foot and 'outrigger' assembly.

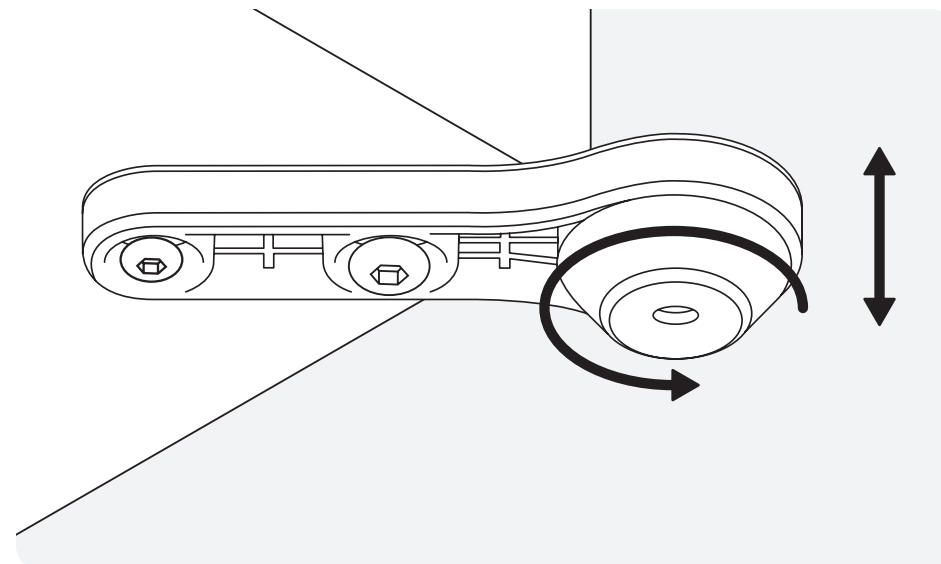


Note: Please ensure there are no hidden wires under the carpet that could be damaged by the spikes.



Levelling the speaker (Bronze 300 7G)

You can check that the speaker is level on all sides by using a spirit level (not supplied). If it's slightly off-level, unscrew the foot at the lowest point and check again. Continue this process until the cabinet is fully level. Use the locking nuts on each foot to fix the feet in place and to stop any unwanted vibrations.



Mounting the speaker

Using the included drilling template, you can mount Bronze On-Wall 7G in a vertical or horizontal configuration on a wall.



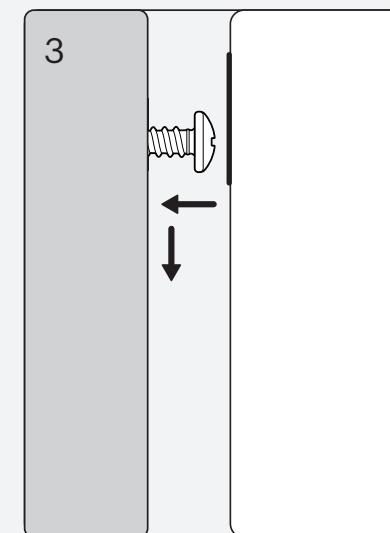
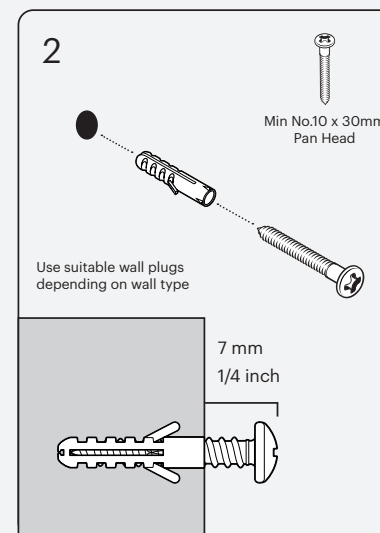
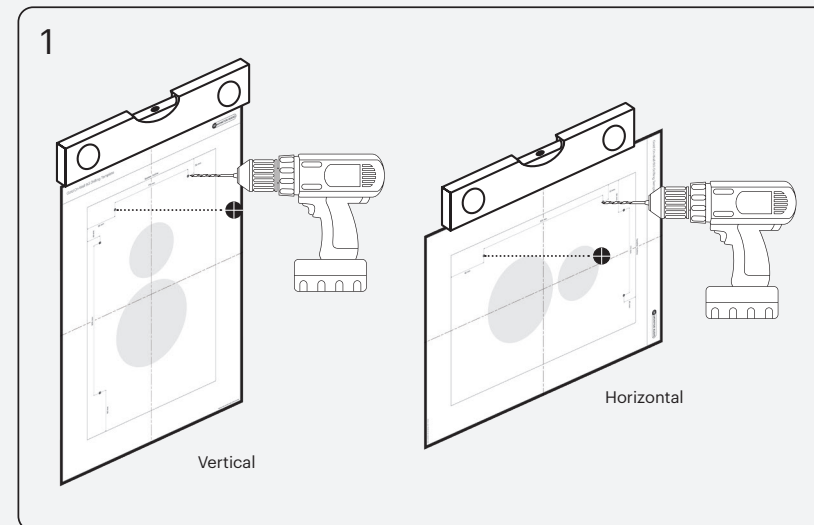
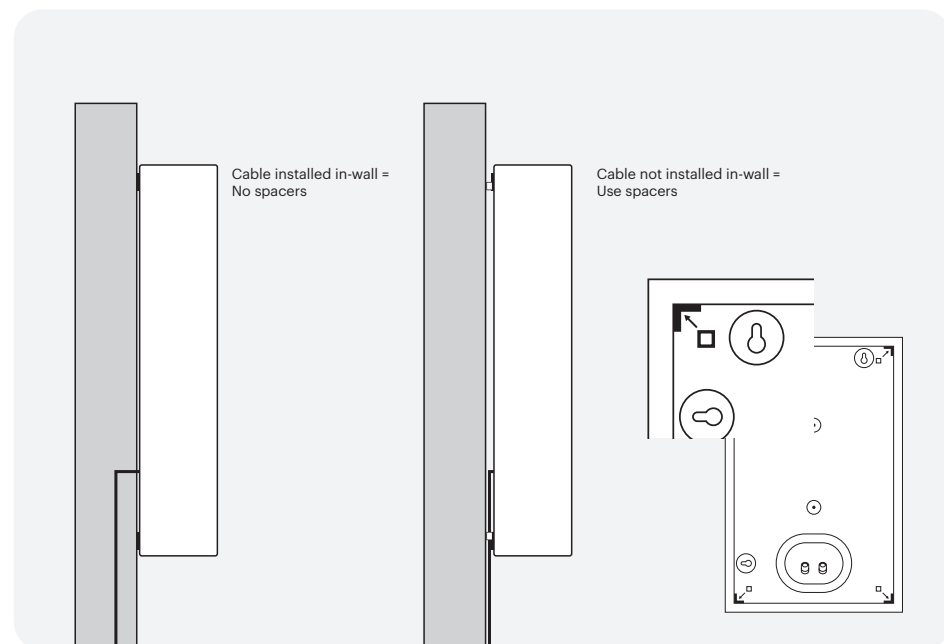
Note: Fixings are not included in the box. Use suitable wall plugs depending on the type of the wall with a weight allowance of at least 7kg (15lb 7oz).

1. Using a spirit level to measure, attach the template to the wall at a 0° angle. Fix to the wall with masking tape. Drill through the drill hole marks into the wall.
2. Remove the template, insert the wall plug and screw (Min No.10 x 30mm pan head screw), leaving a 7mm (1/4 inch) gap between the wall and screw head.
3. Locate the screw heads on the product's hooks, then drop down to secure.

Using the wall spacers

Wall spacers are included with the Bronze On-Wall 7G to give you the choice of installing speaker cables into the wall, or to run behind the product.

If you choose to use the wall spacers, they can be installed by pushing them into the corners of the product as pictured below.



2 channel system

When arranging a 2 channel system, the listening position and the loudspeakers should form an equilateral triangle. Ideally the loudspeakers should be positioned approximately 6 - 10 feet (1.8 - 3m) apart and a minimum of 3 feet (91cm) from the side walls. The ideal distance from the rear wall varies depending on the loudspeaker (see list below).

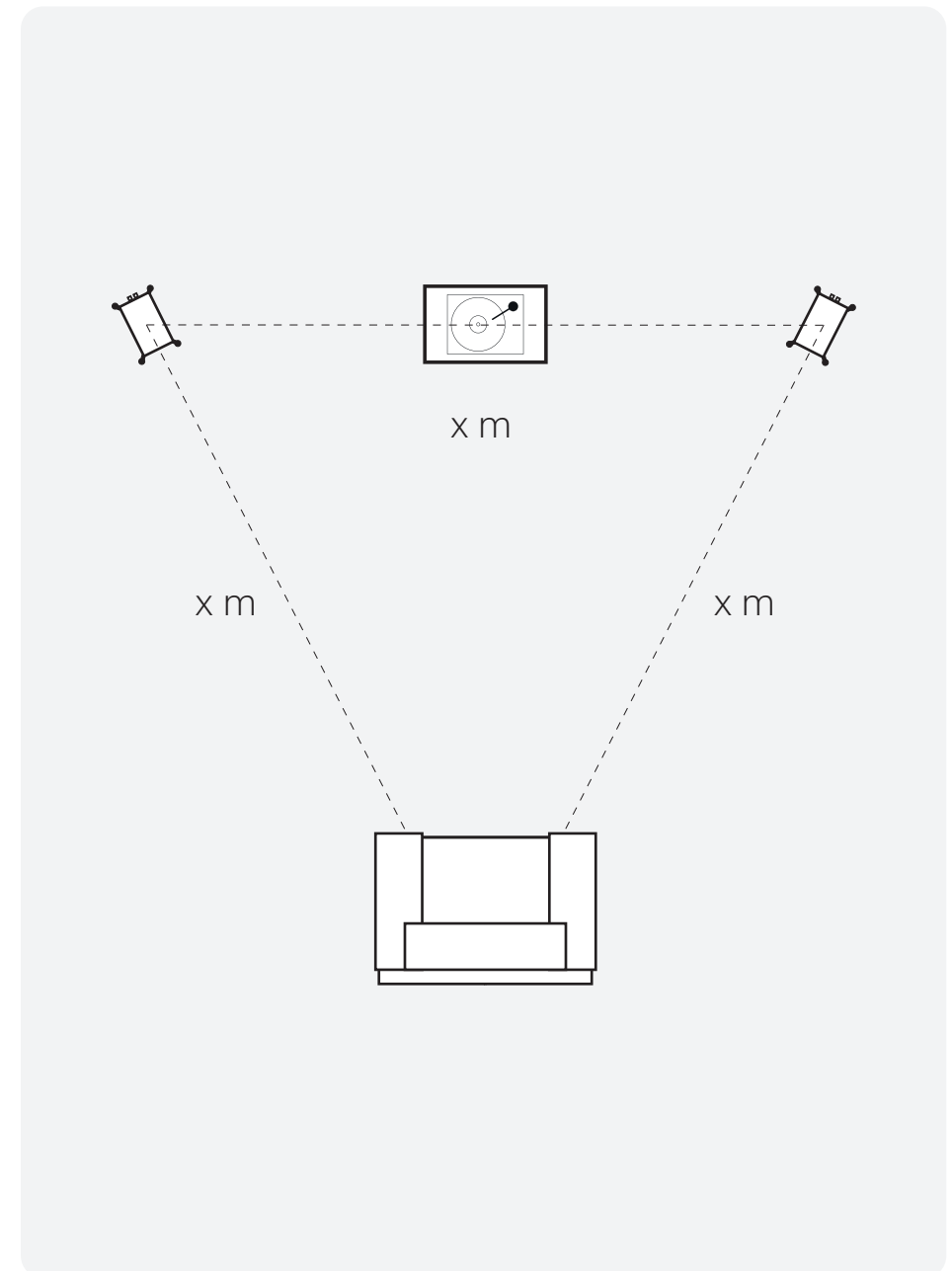
Bronze 50 7G	15 - 30 cm / 6 - 12 "
Bronze 300 7G	20 - 36 cm / 8 - 14 "

Note: These are recommended distances for optimal performance. Actual results will vary dependant on room size, construction and personal tastes.

Experimentation is strongly advised when setting up the loudspeakers, as environment and personal preference will differ with every installation.

If there is insufficient bass for example, try moving your loudspeakers closer to the rear wall. The opposite approach is recommended if there is excessive bass. Additionally refer to the information relating to port bungs on page 15.

If stereo imaging is being lost, try 'toeing' them in slightly. Sounds that are recorded equally to each channel should sound as though they come from between the speakers. The angle should be adjusted to personal tastes, the speakers are designed to be pointed to a point behind the listener. For a more airy sound point the speakers directly towards the listening position or to reduce this point them direct forward.



AV positioning

Please refer to the illustration on the right for the ideal angles and positions of each loudspeaker in your surround system. The loudspeakers should be distanced from the wall according to the requirements of the loudspeaker, which are listed in the section for 2 channel positioning on page 6. However, due to AV receiver crossover filter settings, they may be positioned closer to the wall. Experimentation is advised.

Note: The images are for illustrative purposes only. See diagram on the right.

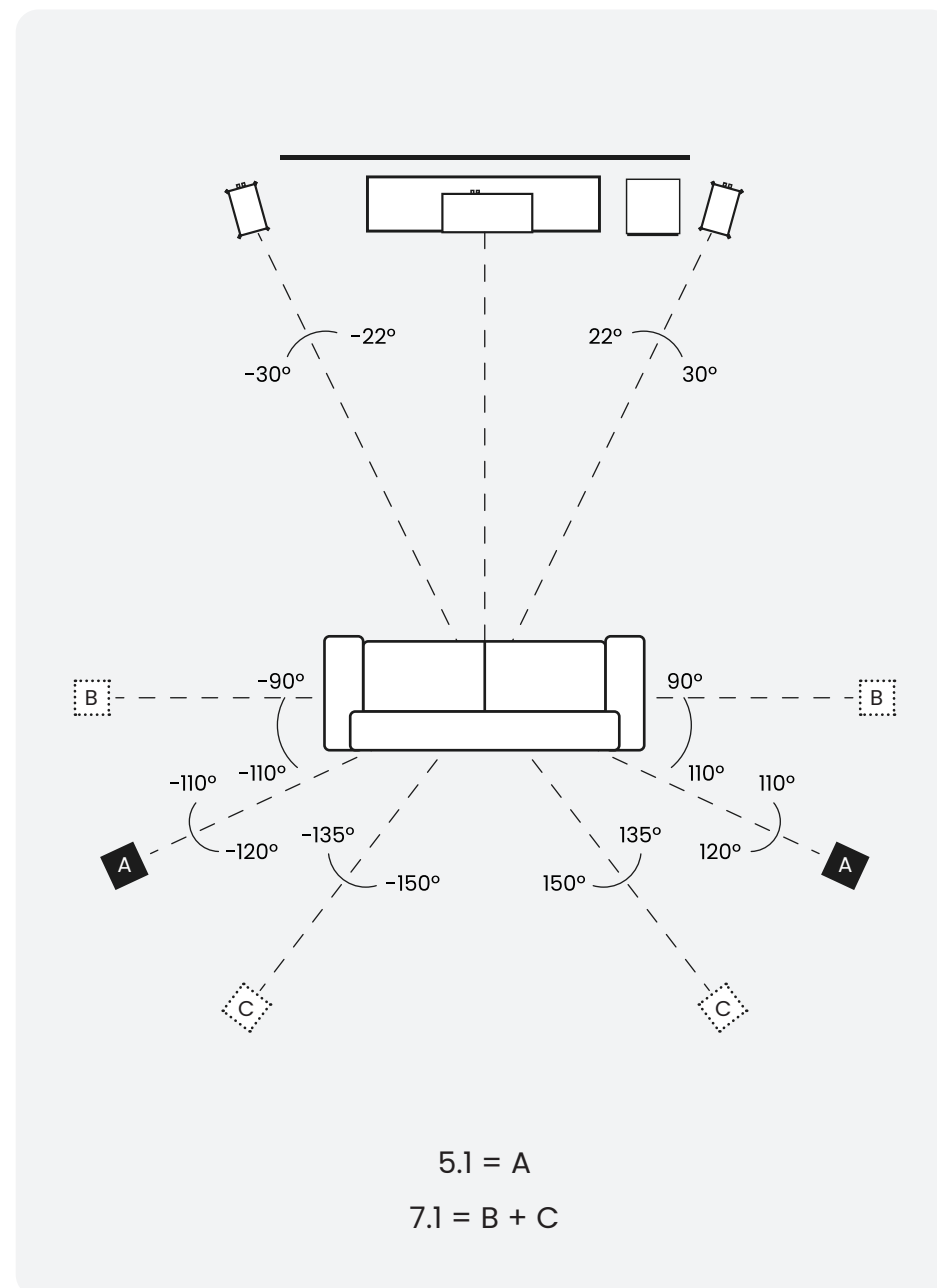
If setting up a 5.1 system you should place your surrounds in position (A).

If setting up a 7.1 surround system you should place your side speakers in position (B) and rear loudspeakers in position (C) to create a full 360° soundstage,

If the sound is too bass heavy or there is bass boom from the room when playing music (without a subwoofer), try moving the loudspeakers slightly further away from the wall(s). In a system with a subwoofer, try adjusting the crossover frequency settings for the loudspeakers and/or subwoofer or changing the subwoofer's position. If placed in a corner, the subwoofer can over excite certain room modes.

If there doesn't seem to be much bass from the system, check what the AV receiver has set the speaker size to. If the loudspeakers have been set to large as part of the auto setup, try setting them to small, which will send more bass frequencies to the subwoofer. Also check the crossover frequencies of the loudspeakers and subwoofer as well as the individual channel levels.

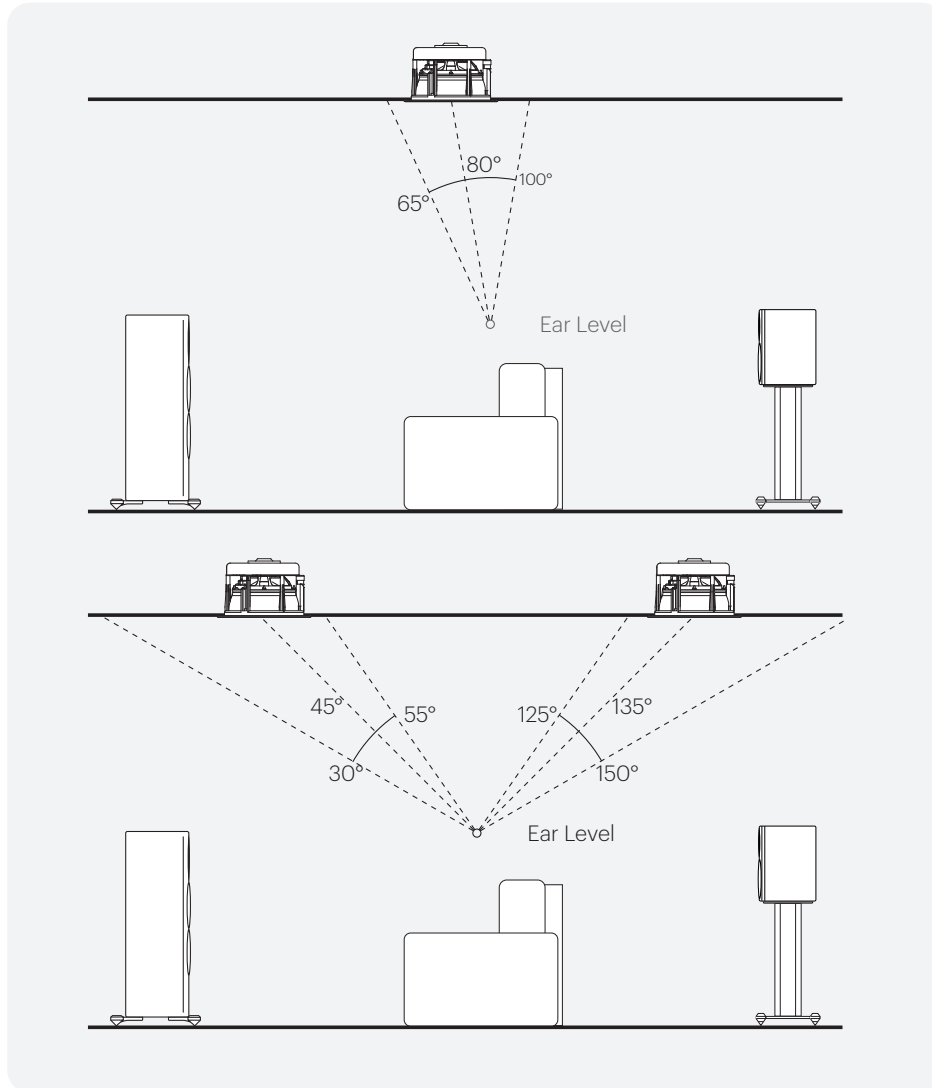
The Bronze Centre 7G centre channel should be positioned so that it is pointing at the viewing position and at approximate ear height.



Dolby Atmos®

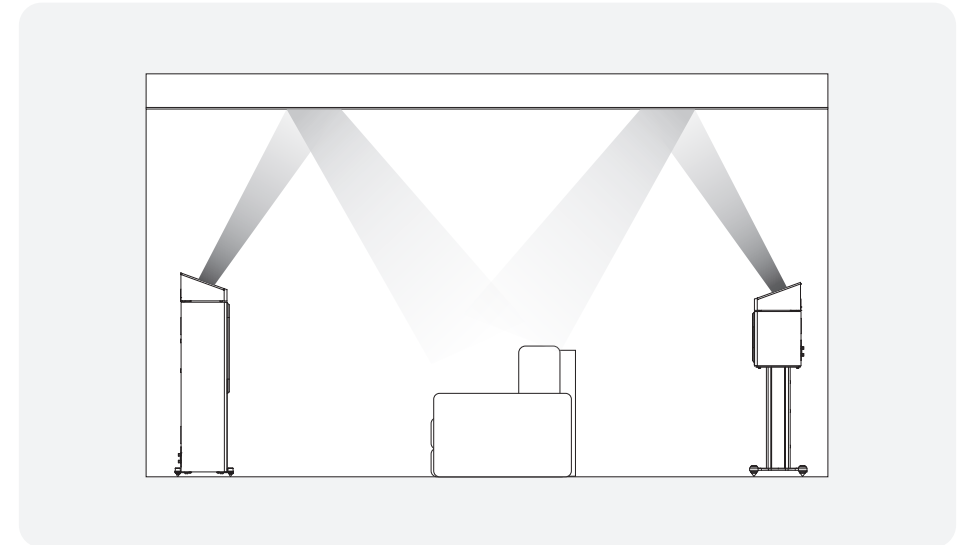
When arranging the overhead channels in a Dolby Atmos® system, we would recommend using our in-ceiling loudspeakers.

Please see the diagram below for ideal positioning of 2 or 4 Dolby Atmos® loudspeaker setups. Typically these would be in line with the front left and right loudspeakers.



Bronze AMS 7G Dolby Atmos® Enabled Speaker

Our new Bronze AMS 7G speakers offer a dedicated solution and alternative to in-ceiling Atmos installations. They can be positioned directly on top of the front and/or rear speakers in a 2 or 4 Atmos speaker setup. Additionally and alternatively, the Bronze AMS 7G can also be wall mounted for use as surround or height speakers.



Fixing the Bronze On-Wall 7G or Bronze AMS 7G to a wall

CAUTION: Always determine where the Bronze On-Wall 7G or Bronze AMS 7G will be fixed and the structure of the wall. For safety reasons, if unsure of your ability to provide a secure and safe fixing, do not attempt to fix these speakers to a wall. Instead, please obtain the services of a competent and qualified trades person.

CAUTION: Ensure that water pipes or electricity cables do not run behind where the speakers are going to be secured. Work from secure steps and avoid trailing wires.

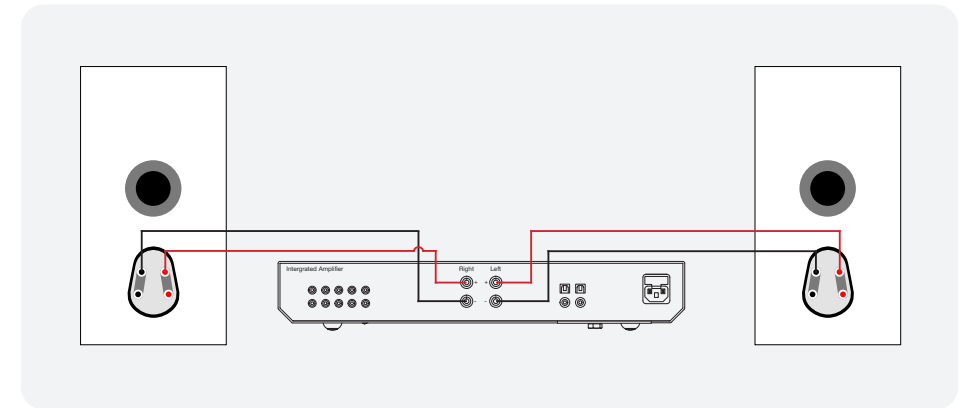
Note: We do not supply wall fixing screws and plugs with the Bronze On-Wall 7G or Bronze AMS 7G. Please only use suitable fixings for the type of wall construction the speakers will be fixed to.

The Bronze On-Wall 7G and Bronze AMS 7G come with keyhole inserts. To fix the speakers to the wall, we would recommend using the wall fixing template enclosed within the packaging carton. The Bronze On-Wall 7G can be mounted in horizontal or vertical orientation. If the speaker cable is not installed in the wall and is running down the back of the product, the supplied wall spacers can be used.

Single wiring

Single wiring is achieved via a single set of cables to the terminals on the back of the loudspeaker. Internally the loudspeaker crossover guides the frequencies to the appropriate driver/ tweeter. Low frequencies to the bass drivers, mid frequencies to the mid/bass drivers and high frequencies to the tweeter.

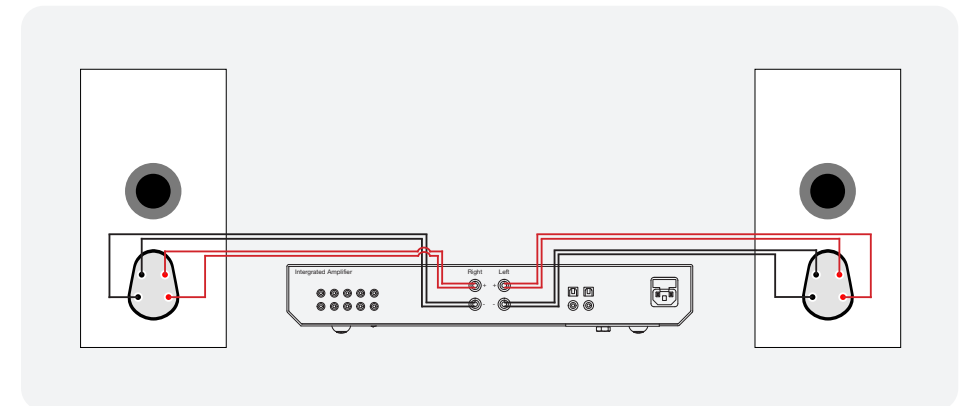
⚠ CAUTION: When using this method you must keep the terminal links in place.



Bi-wiring

Bi-wiring is accomplished by connecting separate pairs of loudspeaker cables to the terminals on the loudspeaker from a single pair of connections on the amplifier. In the case of the Bronze Series 7G, the bottom terminals connect to the bass driver(s) and the top terminals connect to the tweeter in 2 way loudspeakers, or the mid and tweeter in 3 way loudspeakers.

⚠ CAUTION: When using this method you must REMOVE the terminal links.

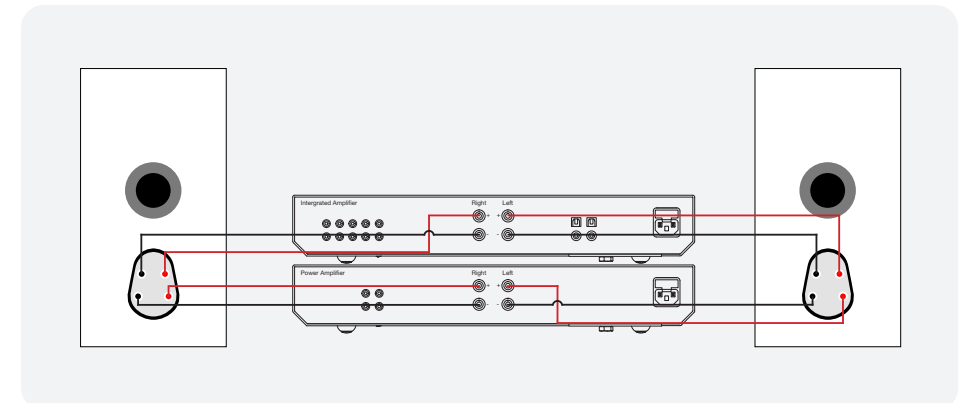


Bi-amping

Bi-amping is the same as bi-wiring except you are introducing a second amplifier into the equation.

In order to bi-amp you must connect a set of loudspeaker cables to the top terminals on the loudspeaker from one amplifier and another set of loudspeaker cables to the bottom terminals from the second amplifier.

⚠ CAUTION: When using this method you must REMOVE the terminal links.



Running-in your loudspeakers

Run your loudspeakers in by playing normal music at low-mid listening levels for approximately 50-70 hours play time. You may find the sound will continue to improve even after the 70 hour mark.

This can be done naturally over time: like a fine wine the performance will improve with age.

Alternatively if you wish to run the loudspeakers continuously on loop you can decrease the audible volume/presence by placing the loudspeakers face-to-face so that the drivers/tweeters are directly aligned and as close as possible. Then connect the amplifier to your loudspeakers so that one is as normal (in phase): positive to positive and negative to negative (red to red and black to black), and the other loudspeaker out of phase: positive to negative and negative to positive inputs on the loudspeaker.

Port bungs (Bronze 50 7G, Bronze 300 7G & Bronze On Wall 7G only)

If the loudspeaker is to be installed in a small room, typically 9 sqM (80 sqFT), or a room known to reproduce accentuated bass response, it may be desirable to fit a port bung in the affected speaker. However, experimentation is recommended with positioning of the loudspeaker in the room prior to fitting. To optimise performance from the loudspeaker it is important to ensure the loudspeaker is not positioned too close to a wall (except the Gold On Wall 7G) or near the corners of a room.

If the positioning of the loudspeaker is predetermined by room aesthetics or layout, you find you have accentuated bass or in the case speakers are to be sited in close proximity (less than the minimum suggested distances of page 6) to a rear wall (such as on a bookshelf, positioned in a cabinet or on a stand close to a wall), we recommend fitting the supplied port bungs to the ports. With speakers that have 2 ports, such as the Bronze 300 7G, only one port bung should still be used per speaker.

This will reduce the bass 'boom' sometimes termed as overhang, and assist the loudspeakers to reproduce their best performance under these environmental conditions. 'Boom' is generally caused when bass energy from the loudspeaker 'excites' room modes and causes an accentuation at a particular frequency, or number of frequencies.

When fitting port bungs the overall bass extension will not be reduced, however bass energy/output around the port tuning frequency will be reduced. This has the effect of reducing bass 'boom' while increasing bass clarity and apparent agility.

In all circumstances experimentation is highly recommended.

Upkeep of cabinets

The finish of the cabinet can be maintained by regular dusting using a soft cloth or micro fibre/ lint-free cloth. The drive units should only be cleaned with a damp cloth if more than normal dusting is required.

Never use solvents or aggressive cleaning/polishing agents on your Bronze Series 7G loudspeakers. When in doubt, test the cleaning product on an inconspicuous area on the cabinet and let it sit for several days before committing to its use on visible portions of the cabinet.

Retention Bolt adjustment

The new Bronze Series 7G has a bolt-through driver fixing to reduce cabinet colouration. Each bolt acts as a rigid brace, but also removes the need for conventional driver fixings as well, effectively decoupling the driver and front baffle to eliminate a further source of resonance.

Note: Should this bolt become loose over time, or has worked loose during transit, then please use the supplied allen key to tighten the bolt back up. This only needs to be a quarter turn after the tension has been taken by the bolt. In the factory they are tightened to a torque of 1.5 Nm.

In the unlikely event that there is a defect with this product, it is covered by the Monitor Audio manufacturer's warranty, provided that the product was supplied by an authorised Monitor Audio retail specialist.

For the period of cover please refer to the product page on our website at monitoraudio.com

Register your Monitor Audio speakers
to ensure the best possible product and customer support

Register your speakers using the QR code
or visit monitoraudio.com/registration



Model	Bronze 50 7G	Bronze 300 7G	Bronze Centre 7G
System Format	2-Way	2.5-Way	2-Way
Frequency Response, In-Room (-6dB)	41 Hz - 30 kHz	34 Hz - 30 kHz	50 Hz - 30 kHz
Sensitivity (2.83v @ 1m, Free-Field)	86 dB	88 dB	88 dB
Sensitivity (2.83v @ 1m, Installed)	N/A	N/A	N/A
Nominal Impedance	8 Ohms	8 Ohms	8 Ohms
Minimum Impedance (20Hz to 20kHz)	4.0 Ohms @ 200 Hz	4.4 Ohms @ 38 Hz	4.3 Ohms @ 200 Hz
Maximum Peak SPL (AES75, Z-weighted)	112 dB	118 dB	119 dB
Continuous Power Handling (CTA 426-B)	100 W	150 W	120 W
Recommended Amplifier Power (RMS, Music Signal)	50 - 200 W into 4 Ohms 30 - 100 W into 8 Ohms	75 - 300 W into 4 Ohms 40 - 150 W into 8 Ohms	60 - 240 W into 4 Ohms 30 - 120 W into 8 Ohms
Bass Alignment	Ported HiVe II	Ported HiVe II	Sealed
Port Tuning Frequency	47 Hz	38 Hz	N/A
Crossover Frequency	LF/HF: 3.0 kHz	LF/MF: 470 Hz MF/HF: 2.6 kHz	LF/HF: 2.7 kHz
Drive Unit Complement	1 x 6" C-CAM bass mid driver 1 x 25 mm C-CAM Gold Dome tweeter	2 x 6" C-CAM bass mid driver 1 x 25 mm C-CAM Gold Dome tweeter	2 x 6" C-CAM bass mid driver 1 x 25 mm C-CAM Gold Dome tweeter
Available Finishes	White Black Walnut	White Black Walnut	White Black Walnut
External Dimensions with all accessories fitted (H x W x D)	335 x 185 x 328 mm (13 ^{3/16} x 7 ^{5/16} x 12 ^{7/8} ")	1005 x 269 x 392 mm (39 ^{9/16} x 10 ^{5/8} x 15 ^{7/16} ")	205 x 500 x 229 mm (8 ^{1/16} x 19 ^{11/16} x 9 ")
Weight (Product, Each)	6.4 kg (14 lb 2 oz)	15.6 kg (34 lb 6 oz)	7.9 kg (17 lb 7 oz)
Sold As	Pair	Pair	Single

Model	Bronze On-Wall 7G	Bronze AMS 7G Dolby Atmos [®] Enabled Speaker
System Format	2-Way	2-Way
Frequency Response, In-Room (-6dB)	42 Hz - 30 kHz	83 Hz - 30 kHz
Sensitivity (2.83v @ 1m, Free-Field)	N/A	86 dB
Sensitivity (2.83v @ 1m, Installed)	88 dB	N/A
Nominal Impedance	8 Ohms	8 Ohms
Minimum Impedance (20Hz to 20kHz)	4.7 Ohms @ 17 kHz	3.7 Ohms @ 10 kHz
Maximum Peak SPL (AES75, Z-weighted)	122 dB	110 dB
Continuous Power Handling (CTA 426-B)	100 W	60 W
Recommended Amplifier Power (RMS into, Music Signal)	50 - 200 W into 4 Ohms 30 - 100 W into 8 Ohms	30 - 120 W into 4 Ohms 10 - 60 W into 8 Ohms
Bass Alignment	Ported	Sealed
Port Tuning Frequency	47 Hz	N/A
Crossover Frequency	LF/HF: 3.0 kHz	LF/HF: 4.8 kHz
Drive Unit Complement	1 x 6" C-CAM bass mid driver 1 x 25 mm C-CAM Gold Dome tweeter	1 x 4" C-CAM mid-range driver 1 x 25 mm C-CAM Gold Dome tweeter with optimised waveguide
Available Finishes	White Black Walnut	White Black Walnut
External Dimensions with all accessories fitted (H x W x D)	465 x 300 x 135 mm (18 ^{9/16} x 11 ^{13/16} x 5 ^{3/16} ")	173 x 185 x 302 mm (6 ^{13/16} x 7 ^{5/16} x 11 ^{7/8} ")
Weight (Product, Each)	7.0 kg (15 lb 7 oz)	3.1 kg (6 lb 13 oz)
Sold As	Single	Pair

Listen Again.

Monitor Audio Ltd.
24 Brook Road
Rayleigh, Essex
SS6 7XJ
England
Tel: +44 (0)1268 740580
Email: info@monitoraudio.group

monitoraudio.com